

**BOYS' & GIRLS'
2019 B-C STATE
TENNIS TOURNAMENT**



**May 16-18 2019
Bozeman, Montana**

2019 State B-C Tennis Tournament

Tournament Directors – John O’Dell

Boys Meet Manager – Brian Scott

Girls Meet Manager – Travis Richtmyer and Alexa O’Dell

May 16-18, 2019

Wednesday, May 15, 2019

6:00 PM Practice at Bozeman High --- MSU not available
6:30 PM Coaches Meeting – Bozeman High North Cafeteria

Thursday, May 16, 2019

8:00 AM Tournament play begins

Girls at MSU

Boys at Bozeman High

Friday, May 17, 2019

8:00 AM Tournament play continues

Girls at Bozeman High

late day girl matches could be played at MSU if we are in a time crunch

Boys at MSU

Saturday, May 18, 2019

8:00 AM Tournament play continues

Both genders at MSU

11:00 AM

Championships

12:30 PM

Consolation Championships

3:00 PM

Awards Ceremony at MSU Courts

The above schedule assumes good weather and reasonable play times.

Adjustments to this schedule will be made as needed.

In case of bad weather all matches will be moved to MSU Indoor

Hosting School:

Broadwater (Townsend) High School

201 N. Spruce, Townsend, MT 59644

John O’Dell

jodell@townsend.k12.mt.us

HS Phone 441-3445

HS FAX 441-3466

Cell 980-1584

2019 STATE B-C STATE TENNIS TOURNAMENT INFORMATION

from the Post Season Tennis Procedures Manual

Tournament Management

Tournament Managers

Boys' Tournament

Brian Scott 1-406-788-2350

Girls' Tournament

Travis Richtmyer 1-406-949-0435

Alexa O'Dell 1-406-980-1584

The tournament manager must also determine who the rules officials will be at the tournament site. The rules official is responsible for administering the rules of tennis.

Communication

The host school will send an information packet to each school. The packet will provide information on all contacts, List of Participants Form, fees, court availability for practice, spectator areas, deadlines for entry, food service, directions, starting times, local rules, responsibility of players and coaches, who to call with any questions.

Coaches Meeting

It is customary to have a coaches meeting before the start of the tournament. It is beneficial to have all of the key tournament personnel available to address the group concerning court, schedule, playing rules, etc.

The coaches' meeting will be at 6:30 pm on Wednesday, May 15, 2019 at the BHS North Cafeteria.

We will provide updated tournament information at that time. You also receive your coaching and participant badges provided this year by MHSAs and the Montana National Guard.

Corporate Sponsors

Wilson is the official ball and tennis supplier of the Montana High School Association. The Wilson US Open ball is the ball used for all MHSAs state tennis meets.

NorthWestern Energy has been a sponsor of MHSAs for over 20 years. NorthWestern Energy supports all Montana High School Association events by providing trophies and other awards each academic year.

Montana Farmers Union Insurance offers security for their policy holders, and they're joined with the MHSAs to secure opportunities for high school activity participants.

Stockman Bank is the titled sponsor for the sportsmanship program. The MHSAs/Stockman Sportsmanship Program provides many resources for member schools to use in promoting and rewarding good sporting behaviors by players, coaches and spectators at interscholastic activities.

The **Montana Army National Guard** believes Montana is a great place to live, work, go to school, and best of all "Guard". The Montana Army National Guard has been a sponsor of MHSAs activities for the past several years.

Montana Toyota Dealers your Montana Toyota Dealers are proud to support the 179 schools, thousands of families and kids, that support MHSAs here in Montana.

Montana's largest insurer **Blue Cross Blue Shield of Montana**, who has been providing top notch health insurance plans here in to Montanans for over 75 years, has partnered with MHSAs as a corporate partner.

Court Monitors

Tournaments may have a need for court monitors. Court monitors should follow the following guidelines:

- The duties are to provide decisions related only to the remedy asked for by the players involved.
- As a linesman only overrule a call when requested to do so.
- If requested to monitor foot faults or net violations, you will make the call immediately, as a delayed call will impede the progress of the game.
- Introduce yourself to both players. Remember your purpose is to ease any tensions, not increase them.

Court monitors can be called at any time. They should be familiar with the site rules and especially with the job description given for court monitors. The tournament manager should provide the court monitor with any necessary site rules. Any problems not addressed should be referred to the head official at the site and ultimately to the tournament manager.

Drug and Alcohol Policies

Tournament managers will inform all school administrators of the attending schools of the MHS A Drug and Alcohol Policy, which states: *The MHS A prohibits any use and/or possession of tobacco, alcohol or other mood altering drugs during competition. Violation will cause the coach or participant to be disqualified from further participation in that event.*

Fund Raising

The soliciting of voluntary contributions is prohibited at any Association contest. Unless approved by the MHS A Executive Board, raffles (or similar fund raising activities) are prohibited at playoffs, championship games, tournaments, meets, and/or festivals that are under the direct supervision of the MHS A Executive Board. Fifty/fifty tickets are considered a form of raffle type fund raising and are therefore prohibited.

Corporate sponsorship of any post season event is the responsibility of the MHS A Executive Board and requires Board approval.

Exceptions are: a) Program advertisements and
b) Signage or announcements acknowledging the receipt of donated goods including food or beverages for the hospitality room, the use of tents at outdoor events, or the use of other equipment necessary for staging the event. Signage should be placed only in the appropriate areas; i.e. on the tents or in the hospitality room/area.

Established facility sponsorships are not affected provided that MHS A corporate sponsorship requirements are met.

List of Participants

Participating schools should send the MHS A form directly to the divisional tournament managers, and then divisional managers will forward their results to the state tournament site. Before a substitute can be used in any post-season tournament, he/she must be approved by the MHS A office.

Media Policy

- Policies for Videotaping, Cybercasting, Telecasting and Photography of MHS A events are outlined on pages 50-53 of the MHS A Handbook.
- Photographs can be taken for personal use only.
- Legitimate media members may register for post season credentials at www.mhsa.org on the Media Resources page.

Seeding

For the state tournaments, official pairings for the State Tennis Meets will be released by the MHS A office after the divisional tournaments are completed.

Team Area

If you set up an area for your team, please have someone in attendance to watch over personal/team items. Please police your area for trash at all times and check closely before your departure each day for personal/team items. Please respect the facilities that we are using.

Weather

A. Guideline on handling contests during lighting disturbances.

The purpose of these guidelines is to provide a default policy to those responsible for making decisions concerning the suspension and restarting of contests based on the presence of lightning. The preferred sources from which to request such a policy for your facility would include your state high school association and the nearest office of the National Weather Service. - Proactive Planning

1. Assign staff to monitor local weather conditions before and during events.
2. There is a new lightning policy that has been adopted by many sports medicine groups and governing bodies. The major change is that if ANY thunder is heard OR a cloud-to-ground lightning bolt is seen, play should be suspended, stands should be cleared, and all should seek shelter. Previously, the recommendation suggested that if there was at least a count of 30 seconds between the thunder and the lightning then the storm is far enough away to not be of concern. This is no longer considered appropriate or accurate. The consensus is there is no thunder without lightning and vice versa, so if one or the other is noted, both are there Thirty-minute rule. Once play has been suspended, wait at least 30 minutes after the last flash of lightning is witnessed or thunder is heard prior to resuming play.
3. Develop an evacuation plan, including identification of appropriate nearby shelters.
4. Hold periodic reviews for appropriate personnel.

B. Rain Delays

For any extended rain delays, Mark Beckman, Executive Director of the MHSA, must approve rescheduling of tournament play to other dates – including the authorization to play on Sunday.

C. Heat Related Issues

The following guidelines should be instituted by meet management in the following order to ensure the safety of the athletes should heat and heat related issues become a factor.

- Time extension on change overs.
- Official / Meet manager may institute periodic timeouts during the match after game points length of timeouts will be dependent upon weather circumstances.
- The meet director in consultation with medical personnel will determine the continuation of tennis outside in excessive heat. Matches could be shortened at the conclusion of a round

Vendors

Vendors of any other kind of good or service (besides normal concessions) must have written approval from the Executive Director of the MHSA.

Website MHSA Updates – Results will be posted on the MHSA Post Season Tennis Page throughout the tournament

III - Playing Rules for MHSA Tennis Applies to all Post Season Play

USTA playing rules will be used for all competition in addition to any local rules or MHSA rules and regulations. The host manager or their designee will be the sole judge on rule interpretations. The site director serves as the umpire at each site, unless an official rules umpire is present. Situations brought to the judge will not include team or individual names so the ruling can be as objective as possible.

Competitors' conduct

- o All tennis players in MHSA sanctioned tournaments shall be penalized one team point (on the first infraction) and removed from further play (on second infraction) for any unsportsmanlike conduct on site after a match or before the next match or at the end the tournament. ***Any contestant disqualified in an individual tournament competition is not entitled to any points earned in the tournament. All advancement points and placement points are negated. All vacancies created in the tournament pairing shall be scored as forfeits.***

During the match, players are under the point penalty system of warning, point, game, match.

Warnings of this rule shall be written in pretournament letters and given to all players at the pretournament meeting

- o Each tennis court should have a site director and that director should be in charge of administering the penalty system above for violation/abuse of any equipment or facilities, abusive language, abusive gestures, and other obnoxious, offensive behavior.
- o Unsportsmanlike conduct on the tournament site includes, but is not limited to, the following examples: throwing rackets or any equipment, swearing, intentionally hitting game balls out of the court, being abusive to tournament officials, and fighting.

Coaching Information - the MHSAA has instituted this best practice in relationship to coaching rules in all classifications of tennis:

- o Eligible member school tennis coaches are permitted to talk with their player(s):
 - At 90 second change overs, except following the first game of a set. During shortened sets, coaches will be allowed to coach after the first game when the score is 3-2.
 - At 120 second change set break (end of set),. Players must remain inside the fenced area.
 - At split sets 10 minute rest period when playing regular 3rd set or 120 seconds with match tiebreaker. Players must remain at the site, but may leave the court. New balls will be issued for the third set, if requested.
- NOTE:** Coaches may **not** coach players during a bathroom break or a medical timeout (during a medical timeout, coaches can treat players for an injury, just not use this as a coaching opportunity) (per USTA rules)
- o Locations where coaching can occur:
 - Outside Courts – coaching will be at the fence, not on the court. The tournament manager may also determine other coaching locations, based on the facility setup.
 - Inside Courts – Tournament managers will determine the coaching locations
- o Who can coach - to be an approved coach, an individual must:
 - Be approved by their local school district administration.
 - Have passed the MHSAA Coaches Education Program.
 - Have been a bona fide member of the coaching staff during the season.
 - Have proper identification
- o ***Coaches are expected to help with the crowd control at the sites.***

Decisions - The decision must be made on each play. There is no replay of a point except in the case of a let. Only coaches and players can ask the site director to put a judge on the court to make calls if a problem arises.

Feathers worn in the hair - Below is how we will interpret feathers, tinsel or beads that are worn in the hair. We will treat this type of hair device very similar to the NFHS Volleyball Rules. Under NFHS Volleyball Rule 4-1-5 "hair devices made of soft material and no more than 2 inches wide may be worn."

- The rule does not specify the device must be used for hair control
- The feather or tinsel cannot be wider than 2 inches. Length is not addressed in the rule. Most of these will not exceed a width of 2 inches.
- Items that fall within the rule would have to be considered in context with the rules
- If an item presents a problem falling out assess USTA Rules
- If the item is inappropriate by sportsmanship standards prohibit the item from being worn
- Hard and unyielding items being worn are prohibited
- If an item presents a problem falling out (beads), USTA rules will be followed.

Hair Control Devices - Hair devices made of soft material or unadorned hair devices, such as bobby pins, barrettes, or hair clips, no longer than 2 inches, may be worn to control a player's hair. Hair adornments made of soft material and no more than two inches wide may be worn.

Inclement Weather Format – Inside - See Rules for Divisional and State Sections for Inclement Weather Formats

Jewelry Policy - No jewelry, which includes visible body piercing objects, shall be worn in any sport. Any piece of jewelry that is visible at the start of or during a contest is in violation of the MHSA Jewelry Policy. Religious medals must be taped to the body and under the uniform. Medical medals must be taped to the body so they are visible.

If a competitor is observed wearing jewelry during competition the competitor, without delaying competition, shall remove the jewelry before any further competition. If it can't be removed, the competitor will not be allowed to compete until he/she is legally equipped. The tournament manager shall record the name of the competitor, school, event, time the violation occurred and description of prohibited item. The tournament manager shall then notify the head coach of the offending school of the violation. The tournament manager will keep track of the competitor, school, gender and time of day the time warning was given. Any further violations of wearing jewelry by that member of the team shall result in disqualification of the competitor from the event. The tournament manager may exercise some discretion when a new violation is reported within minutes of the team warning being issued.

The protocol for communication of a violation will be established by the tournament manager before the tournament begins.

Match Tiebreaker - Match Tiebreakers are sometimes played in lieu of a third set (See Indoor Format below). They follow the same rules and service rotations as the Set 7-Point Tiebreaker, except the winner is the first to score 10 points by a margin of 2.

Match Warm-ups - Outside and inside warm-up time will be 10 minutes. This warm up will be timed and this time includes serving and net play. Tournament managers may shorten the warm-up to 5 minutes for special situations.

Medical Information and Medical Timeouts

- o In the event of injury, a maximum of 5 minutes for both the diagnosis and treatment, treatment will not exceed 3 minutes
- o The time starts when trainer or coach arrives at site.
- o The player must be able to play within 15 minutes or the opponent may win by default.
- o **There is no additional injury time granted for the same injury.**
- o Bleeding timeout – treatment time ends when bleeding has stopped and playing area has been cleaned. Maximum amount of treatment time is 15 minutes for bleeding.

Nets - All tennis nets must be regulation height. Competitors are prohibited from changing the nets.

Normal Format - Outside

- o Best of 3 sets and regular scoring will be used
- o USTA Set (7 point) tiebreaker will be used – See Tie Breaker Sheet (1st to 7 points by 2 point margin)
- o 10 minutes rest will be allowed if split sets
- o There should be 2 tennis balls per match
- o If indoor courts are being used as part of the regular scheduled play (not because of weather issues), scoring will be the same as the outdoor format.

Players

It is the responsibility of the players to report to assigned courts at the proper times. Matches will be played on a next-up basis. If a player is more than 15 minutes late, he/she will forfeit that match unless his/her lateness has been the direct result of a previous match, in which case he/she is responsible to get that word to the tournament official at the site where the match is to be played. The coaches are responsible to assure that players are at the appropriate location at the appropriate time.

Balls must be picked up at the scoring station before the match begins.

Winners of each match must report directly to the scorer's table with the game balls at the conclusion of the match.

Players call their own games as far as line judging is concerned. Players, only, may initiate requests for the assistance of a site official (line judge, rules or score disputes, etc.). In this instant, the player requesting arbitration must leave the court and report to the manager to make this request.

Should any problems arise, a tournament official may be contacted. The site official will be stationed at the scoring station and an assistant will be roaming the courts. If further remedies are needed the tournament manager may be contacted.

Rest Time Between Matches - USTA rules state there is a 60 minutes rest between singles and doubles matches if competitors are playing full matches (including any matches using a match tiebreak for the 3rd set). **When players are involved in back to back matches, the MHSA will allow a minimum of 30-minute rest period and a maximum of 60 minutes rest period for both singles and doubles competition. After the 30-minute rest period, the match will be allowed to begin if both the players and coaches involved are ready to start the match.**

For consistency, the MHSA recommends a minimum of 30 minutes rest for all matches.

Set Tie Breaker - The MHSA Method of Breaking Ties (USTA Set (7-point) Tie Breaker) will be used throughout the tournament, except for the tiebreaker mentioned in the Inclement weather format section.

Scoring Devices - If possible, scoring devices should be available to keep score at each court. Please inform players to use them.

Uniforms for Competitors: Per MHSA Tennis Rules, Section I, General Rules and Regulations, item 2, which can be found under the MHSA Uniform/Dress Codes rules in this manual or in the MHSA Handbook

Warm-ups

Warm-ups (to include serving and net play) will be restricted to 10 minutes. Players may prepare for their pre-match warm-up by "loosening up" on the grass adjacent to the courts.

Class Specific Rules – During competition at all Class B/C Divisional Tennis Meets, players will be limited to 3 full matches per day unless players have played less than 6 hours, then 4 matches would be allowed. There is no match limit per day for shortened matches.

V – Rules for State Tennis Meets

Class B/C State Tournament Costs

Each Class B-C school choosing to participate in their state tennis meet will be required to share proportionately the cost of the tournament by paying a fee per participant. This fee will be set by the MHSA Executive Board when the state site is determined.

A fee of \$12 will be charged for each participant that enters the state tournament. For instance, a singles entry would need to pay \$12.00 and a doubles team would pay \$24.00. Schools are to bring a check that should be made out to BHS and send to Wanda Moldenhauer 201 North Spruce Townsend MT 59644 or turn it into the tournament managers at the coaches' meeting.

Competition Format – Normal Conditions

See Section III of this manual - Playing Rules for MHSA Tennis - Normal Format – Outside

Competition Format - Inclement Weather Format

The tournament has reserved all four of the indoor courts at MSU in case of inclement weather.

- o Option 1 - Best of 3 sets.
 - Sets 1 & 2 regular but each set will be shortened by starting at 2 games each.
 - Set 3 - 10 point match tiebreaker - first to 10 points but win by 2.
 - A 120 second set break, if split sets. Once a round has started, the scoring format will be the same whether the round is finished inside or outside.
 - If indoor courts are being used as part of the regular scheduled play (not because of weather issues), scoring will be the same as the outdoor format;
 - Tournament Director can modify to no add scoring if needed.

Entries for State

Entries to the State Tennis Meets will be certified by the division tournament manager. These entries must be reported not later than the Monday before the opening of the state tennis meet.

State Tournament Brackets

- For the state B-C girls' meet - each of the divisions will qualify 4 singles players for a 32 player singles bracket at state and each of the divisions will qualify 3 doubles teams for a 24 team bracket to state.
- For the state B-C boys' meet - each of the divisions will qualify 6 singles players for a 24 player singles bracket at state and each of the divisions will qualify 4 doubles teams for a 24 team bracket to state.

Final brackets will be set by MHSА after receiving all the information on state qualifiers from divisional tournament managers. These brackets will be sent out when they become available.

State Tournament Scoring

Class B-C: 1st-10 points, 2nd-7 points, 3rd-5 points, 4th-4 points, 5th-3 points, and 6th-1 point.

The four events are boys' singles, boys' doubles, girls' singles and girls' doubles. To determine team champions in the state tournaments, two (2) advancement points will be given to those players advancing on the winners' bracket and one (1) advancement point for those advancing on the consolation brackets, one point also for defaults, forfeits and disqualifications. Byes receive two (2) points on the winners' side of the bracket if the individuals win their next match and one (1) point if the player who receives the bye wins the next round on the consolation side of the bracket.

The entire tournament will be "2 out of 3 sets match format" unless weather becomes a problem. The decision to modify the format of play will be made by the tournament director.

If we are forced to move the tournament inside and change the format of the tournament, the following will apply: Players who have completed at least one set will complete that match on the (2 out of 3) set-scoring basis. In the event of a rain delay, match scores will continue, but all games not completed will be restarted. The delay decision will be made by tournament manager. If the courts need to be squeezed when play resumes, a five-minute warm-up will be given.

Substitutes at State

Because of injury, illness or other emergency situations, one boy or one girl, who was named as an alternate before the start of competition, may be used as a substitute before or during the state meet for doubles play only. This substitute can only be placed at the beginning of a match. This substitute can be the alternate that was listed for doubles at the divisional tournament or a team member that participated in the divisional tournament *as a singles or a doubles team player* that did not qualify for state.

VI - MHSА Uniform / Dress Code Rule

Participants will wear the following school-approved attire (uniform to include top and bottom garments): shirts will be full-length with finished edges with collars, traditional crewneck, v-neck or mock-turtle neck design. Sleeveless shirts must extend from the base of the neck to the top of the shoulder on each side. Halter tops, spaghetti straps and tank tops will not be permitted. Shorts and skirts will be worn at the waist with a minimum five-inch inseam. All skorts (a pair of compression shorts having a flap or panel across the front and back to resemble a skirt) are legal bottom garments. The skort must be appropriately sized for the individual, worn as the manufacturer intended, and the flap or panel must be long enough to cover the compression shorts.

The upper portion of the tennis dress will be full-length with finished edges with collars, traditional crewneck, v-neck or mock-turtle neck design. It must extend from the base of the neck to the top of the shoulder on each side. Halter tops, spaghetti straps and tank tops will not be permitted. The lower portion of the tennis dress must be appropriately sized for the individual, worn as the manufacturer intended, and the length of the dress must be long enough to cover the compression shorts.

Adornments on clothing or headwear will not advertise drugs or alcohol or contain offensive material as deemed inappropriate by the meet director or tournament manager. After the first violation of this rule, there will be a warning administered for the individual and the team with the uniform violation being corrected within five minutes before continuation of play is to resume. After the second violation, the individual forfeits the match and the team is deducted one (1) team point.

The meet director has the right to waive the uniform rule due to inclement weather; however, each participant must be dressed appropriately during all competition.

VII - Basic Tennis Etiquette and Procedures for Players during Matches

Making Calls

1. A player makes calls on his/her side of the net - promptly.
2. A ball landing on the line is good.
3. Opponents get the benefit of the doubt.
4. If a ball can't be called out with certainty, it is good.
5. The call of a player looking down a line is much more likely to be accurate than that of a player looking across a line. When you are looking across a line, don't call a ball out unless you can clearly see part of the court between where the ball hits and the line. It is difficult for a player who stands on one baseline to question a call on a ball that landed near the other baseline.
6. Partner's disagree on calls. If a player and his/her partner disagree about whether the ball was out, they shall call it good.
7. Audible or visible calls. No matter how obvious it is to a player that his/her opponent's ball is out, the opponent is entitled to prompt audible or visible call.
8. Spectators are never to make calls.
9. Lets should be called when balls roll on the court. The server receives 2 serves.

Serving

1. Servers must call out the game score, **loud and clear**, each time a point is earned.
2. Foot Faults - A player may warn his/her opponent that the opponent has committed a flagrant foot fault. If the foot faulting continues, the player may attempt to locate the site director.
3. Service calls in doubles - The receiver's partner should call the service line, and the receiver should call the sideline and the center service line. Either partner may call a ball that he/she clearly sees.
4. Service calls by the serving team - Neither the server nor his/her partner shall make a fault call on the first service even if they think it is out because the receiver may be giving the server the benefit of the doubt.
5. Receiver readiness - The receiver should make no effort to return a serve when he/she is not ready. If a player attempts to return a serve, it is presumed that he/she is ready.
6. Delays during service - When there is a delay between the first and second serves:
 - The server gets one serve if he/she was the cause of the delay.
 - The server gets two serves if the delay was caused by the receiver or if there was outside interference.
7. Service let calls. Any player can call a service let.
8. Players are not allowed to stand in the receiving court during service. Additionally, a receiver's partner shall not:
 - Move in or around the receiving box, causing a distraction
 - Wave equipment in and out of the receiving box, causing a distraction
9. Rectifying mistakes - The general rule is that errors are rectified as soon as they are discovered but not during play, and points remain.
 - If a server serves from the wrong court, the point stands and he/she serves the next point from the proper court.
 - If in doubles, the wrong person serves, the game stands and his/her partner serves the next game from his/her side. If discovered during the game, the partner whose turn it is to serve, takes over.
10. Discarding a second ball - The server's discarding of a second ball may constitute a deliberate hindrance. If the receiver asks the server to stop discarding the ball, then the server shall stop the practice.

Grunting

1. A player should avoid grunting and making other loud noises. Grunting and other loud noises may bother not only opponents but also players on adjacent court.

Line Judges

1. If line judges are placed on the court, the players continue to call their own lines. Line judges over-rule only if players ask for help.



Sportsmanship



Coaches and Participants:

1. Set a good example for spectators to follow.
2. Respect the integrity and judgment of game officials or other players, and accept their decisions graciously.
3. Respect the integrity and personality of the individual athletes and coaches.
4. Display modesty in victory and graciousness in defeat.
5. Show respect for opponents before, during, and after contests.
6. Represent your team, school and community with dignity.

Spectators:

1. Show respect for opposing players, coaches, spectators, and support groups.
2. Respect the integrity and judgment of officials and accept their decisions graciously.
3. Show respect for members of the coaching staff and team.
4. Display modesty in victory and graciousness in defeat.
5. Recognize and show appreciation for outstanding plays by either team.
6. Use only cheers that are positive in support of their team.

Acceptable Behavior...

- Applause during introduction of players, coaches and officials.
- Players shaking hands with opponents while both sets of fans recognize player's performance with applause.
- Accept all decisions of game officials.
- Spirit Participants lead fans in positive support.
- Handshakes between participants and coaches at the end of contests, regardless of the outcome.
- Treat competition as a game, not a war.
- Coaches/players search out opposing participants to recognize them for outstanding performance or coaching.
- Applause at the end of the contest for performance of all participants.
- Everyone showing concern for an injured player, regardless of team.
- Encourage surrounding people to display only sportsmanlike conduct.

Unacceptable Behavior...

- Disrespectful or derogatory yells, chants, songs or gestures.
- Booing or heckling an official's or other player's decision
- Criticizing officials in any way; displays of temper with an official's call.
- Yells that antagonize opponents.
- Refusing to shake hands or give recognition for good performances.
- Blaming the loss of the game on officials, coaches or participants.
- Laughing or name calling to distract an opponent.
- Use of profanity or displays of anger that draw attention away from the game.

VIII - Tennis Code of Conduct/Point Penalty

Misconduct	*1st Offense	2nd Offense	3rd Offense
• Violation of USTA Rule No. 29, taking more than ninety seconds on changeover or taking more than 20 seconds between points	1 point	4 points	Disqualification
• Prolonging argument over decision after directed to resume play	1 point	4 points	Disqualification/Ejection
• Failure to commence play after expiration of warm-up minutes	1 point		
Lateness in being ready			
• A player or players who are not ready to play, or are not properly attired, when a court and opponent are available after a match has been called will be penalized	1 game after 5 minutes, 2 games after 10 min., defaulted after 15 min.		
• To start a match, after an intermission	1 point per minute or fraction thereof		
• To resume play within fifteen minutes of injury (considered a 1 time-out injury)	Disqualification		
NOTE: The time-out for injury should begin once a trainer is available on the court or if the coach or the site director makes the decision on the court.			
Profane or obscene language or gestures			
• Directed at no one in particular	1 point	4 points	Disqualification/Ejection
• Directed at an official, opponent, or spectator	4 points	Disqualification/Ejection	
Unsportsmanlike acts			
• Knocking ball out of enclosure	1 point	4 points	Disqualification/Ejection
• Intentional racquet dropping	1 point	4 points	Disqualification/Ejection
• Hitting ball or throwing racquet at/near person	4 points	Disqualification/Ejection	
• Intentional racquet dropping to disconcert opponent	4 points	Disqualification/Ejection	
Gross Misconduct			
• Trash talking	1 point	4 points	Disqualification/Ejection
• A single, flagrant, gross act of misconduct	Disqualification/Ejection		
• A single, flagrant, gross act of misconduct after the player has completed his/her last match	1 point team deduction		
Use of an Ineligible Coach	1 point team deduction per match		

***There may be one warning prior to the first offense per competitor for minor unsportsmanlike acts. The tournament manager will announce this procedure during his pretournament meeting. Penalties carry over throughout a tournament.**

NOTE: The tournament manager/site director and eligible coach may invoke point penalties in matches where there is no umpire, provided they personally observe the misconduct. In addition, it is the responsibility of all coaches of participating schools to monitor player conduct. Any coach, tournament manager, or site director who personally observes misconduct may invoke the point penalties, provided they report their action to the tournament manager/site director.

MHSA Rules - All tennis players in MHSA sanctioned tournaments shall be penalized one team point (on the first infraction) and removed from further play (on second infraction) for any unsportsmanlike conduct on site after a match or before the next match or at the end the tournament. During the match, players are under the Tennis Code of Conduct / point penalty system of the USTA.

In accordance with MHSA By-Laws, any player or coach ejected (not disqualified) from a match will be ineligible for the next interscholastic contest at that level of competition, and all other interscholastic contests at any level in the interim.

IX - MHSA Method of Breaking Ties - USTA Set (7-point) Tie Breaker

(For all Divisional and State matches)

7 out of 12 Points

At six all in games, the player whose turn it is to serve shall put the ball into play for the first point of any tiebreaker.

SINGLES: Player A serves Point 1, right court; Player B serves Points 2 and 3, left court and right court; A serves Points 4 and 5 (L and R); B serves Point 6 (L) and, after players then CHANGE SIDES, Point 7 (R); A serves Points 8 and 9 (L and R); B serves Points 10 and 11 (L and R); A serves Point 12 (L). If either player wins 7 points, by a margin of two points, the set shall be recorded as 7 games to 6.

If the score reaches 6 points all, the players then CHANGE SIDES, and players shall continue to serve as before until one player establishes a margin of 2 points. Player A serves Point 13, right court; Player B serves Points 14 and 15, left court and right court; A serves Points 16 and 17 (L and R); B serves Point 18 (L). If the score is still tied, the players then CHANGE SIDES every 6 points and repeat this procedure.

1. The players shall “change sides for one game” after a tiebreak.
2. Player B shall serve first in the set following the playing of the tiebreak, thus assuring that she will be first server if this set also goes into a tiebreak.
3. Players shall change sides during the tiebreak without rest.
4. The tiebreak counts as one game in reckoning ball changes. If a ball change was called for (on) the tiebreak game, new balls shall be used.

POINTS	1	2	3	4	5	6	7	8	9	10	11	12	13	14	15	16	17	18	19	20	21	22	23	24	
Player A	R			L	R			L	R			L	R			L	R			L	R			L	
Player B		L	R			L	R			L	R			L	R			L	R			L	R		

DOUBLES: (A and B) versus (C and D). Assume that Player D has served the 12th game. Same procedure as in singles will apply. Players preserve the sequence of their serving turns. Player A serves Point 1, right court; Player C serves Points 2 and 3, left court and right court; B serves Points 4 and 5 (L and R); D serves Point 6 (L) and, after teams then CHANGE SIDES, Point 7 (R); A serves Points 8 and 9 (L and R); C serves Points 10 and 11 (L and R); B serves Point 12 (L). If either team wins 7 points, by a margin of two points, the set shall be recorded as 7 games to 6.

If the score reaches 6 points all, teams then CHANGE SIDES, and players shall continue to serve as before until one team establishes a margin of 2 points. Player B serves Point 13, right court; Player D serves Points 14 and 15, left court and right court; A serves Points 16 and 17 (L and R); C serves Point 18 (L). If the score is still tied, the teams then CHANGE SIDES every 6 points and repeat this procedure with the continuing sequence of service.

Teams shall “change sides for one game” after a tiebreak with team (C and D) to serve first.

POINTS	1	2	3	4	5	6	7	8	9	10	11	12	13	14	15	16	17	18	19	20	21	22	23	24
Players A&B	AR			BL	BR			AL	AR			BL	BR			AL	AR			BL	BR			AL
Players C&D		CL	CR			DL	DR			CL	CR			DL	DR			CL	CR			DL	DR	

“No-Ad” Scoring

A player need win only four points to win a game. If the score goes to three points all (or deuce), the next point decides the game - it is game point for both players. The receiver has the right to choose to which court the service is to be delivered on the seventh point. If a “No-Ad” set reaches 6 games all, the tiebreaker system shall be used.

Match Tiebreakers

Additional Note: Match Tiebreakers are sometimes played in lieu of a third set. They follow the same rules and service rotations as the Set 7-Point Tiebreaker, except the winner is the first to score 10 points by a margin of 2.

X - Trophies and Awards Information Sheet

Because of the involvement of NorthWestern Energy in the awards program, we are requesting that you recognize the Company in the presentation of awards at the event. Just prior to the presentation of the awards, please announce that NorthWestern Energy is the sponsor of all MHSAs awards.

The only trophies or individual awards that may be presented at any MHSAs tournament site shall be those provided by the MHSAs. No school shall be permitted to purchase or present additional trophies or individual awards over and above those authorized by the MHSAs.

Individual miniature trophies for first and second place MHSAs state championship events may be purchased from the Associations awards provider.

Also, a representative from the MHSAs, either an Executive Board Member or MHSAs Staff Member, will usually be present to assist with the awards presentation.

Finally – Awards ceremonies for the tournament will not take place until all matches are complete. If a team would like to leave early, they will not be involved in the awards ceremony.

State Awards for Boys' and Girls' Tennis

All trophies and medals are provided by NorthWestern Energy. Trophies will be presented to both boys' and girls' teams for 1st, 2nd, and 3rd places. Individual medals will be awarded to each of the top six place winners in both singles and doubles.

Girls Participants in 2019 State B-C Tennis

CENTRAL DIVISION									
Fairfield(FF) Fort Benton(FB) Simms(SMS) Valier(VA)									
GIRLS' SINGLES					GIRLS' DOUBLES				
	Name	YR	School		Name	YR	Name	YR	School
1	Emily Clotfelter	12	FF	1	Katie Giles	12	Megan Clark	11	FB
2	Naemi Wipf	12	FF	2	Chesney Rogers	12	Kenna Pitcher	11	FF
3	Olivia Copenhaver	10	FF	3	Madie Bloom	12	Kierah Kriedeman	10	SMS
4	Adeline Hahn	12	FF						

EAST DIVISION									
Baker(BK) Forsyth(FOR) Poplar(POP) Wolf Point(WP)									
GIRLS' SINGLES					GIRLS' DOUBLES				
	Name	YR	School		Name	YR	Name	YR	School
1	Heather Blackwell	12	FOR	1	Kelsey Miller	12	Madison Moore	12	BK
2	Tesla Erickson	12	BK	2	Hannah Blackwell	12	Roxanne Keefer	11	FOR
3	Lindsay Nefzger	11	WP	3	Sasha Youngman	11	Rachel DeLeon	12	POP
4	Chloe Shields	11	POP						

NORTHEAST DIVISION									
Chinook (CHI) Chester-Joplin-Inverness(CJI) Harlem(HA)									
GIRLS' SINGLES					GIRLS' DOUBLES				
	Name	YR	School		Name	YR	Name	YR	School
1	Shivell Norvick	11	CJI	1	Jade Cecrie	10	Lily Surber	10	CHI
2	Aspen Baker	11	HA	2	Aria Owens	11	Taeshon Schaffer	11	HA
3	Emma Wickum	10	CJI	3	Whitney Doney	11	Michael Anne Humphreys	12	HA
4	Courtney Allen	10	CJI						

NORTHWEST DIVISION									
Choteau (CHO) Conrad (CON) Cut Bank (CB) Great Falls Central/MSDB(GFC)									
GIRLS' SINGLES					GIRLS' DOUBLES				
	Name	YR	School		Name	YR	Name	YR	School
1	Soren Cummings	10	CHO	1	Michaela Gunderson	12	Christine Funk	10	CHO
2	Sam Purpura	11	GFC	2	Macee Barry	12	Jaycee Frydenlund	12	CB
3	Katie Major	9	CHO	3	Madi Siefert	12	Katelyn Edinger	12	CB
4	Lily Overstreet	11	CB						

SOUTH DIVISION									
Anaconda(AN) Granite(GR) Loyola Sacred Heart(LSH) Lone Peak (LP) Valley Christian(VC)									
GIRLS' SINGLES					GIRLS' DOUBLES				
	Name	YR	School		Name	YR	Name	YR	School
1	Evelyn Deschens	9	LSH	1	Melanie Benson	12	Lauren Bodlovich	12	LSH
2	Grace Daniel	10	LSH	2	Emma Daniel	12	McKenna Round	11	LSH
3	Harley Fullmer	12	AN	3	Reece Pitcher	9	Sarah Goff	12	GR
4	Sierra Metesh	12	GR						

SOUTHEAST DIVISION

Broadwater [Townsend] (BR) Jefferson [Boulder] (JF) Three Forks (TF) Whitehall (WH)

GIRLS' SINGLES

	Name	YR	School
1	Jess Barnett	12	BR
2	Britney Welker	11	WH
3	Amanda Bergstad	12	BR
4	Meg Saltzman	11	BR

GIRLS' DOUBLES

	Name	YR	Name	YR	School
1	Leia Schritz	11	Taylor Noyes	11	BR
2	Laurynn Armstrong	11	Kylie Marks	11	JF
3	Becca Larsen	11	Madi Buchanan	12	BR

SOUTHWEST DIVISION

Darby (DB) St. Ignatius(SI) Superior-Alberton(CF)

GIRLS' SINGLES

	Name	YR	School
1	Maria Bugada		SI
2	Elsa Podesta		DB
3	Sophia Delvo		DB
4	Emma Hopwood		CF

GIRLS' DOUBLES

	Name	YR	Name	YR	School
1	Kimber Schlapman		TeaAnna Rouse		DB
2	Barbara Garcia		Alexea Kelsey		CF
3	Abbie Finks		Ariana Brubaker		DB

WEST DIVISION

Bigfork (BF) Troy (TR)

GIRLS' SINGLES

	Name	YR	School
1	Payton Crawford	12	BF
2	Emily Bonner	11	BF
3	Emma Berreth	9	BF
4	Juniper Johnson	10	BF

GIRLS' DOUBLES

	Name	YR	Name	YR	School
1	Ahna Fox	12	Merideth Bedford	11	BF
2	Cailie Martinz	9	Dana Saari	10	BF
3	Kiersten McCully	9	Rhonelle Morton	11	TR

Girls Court Scheduling

ALL MATCHES ON A NEXT-UP BASIS ON THE NEXT AVAILABLE OPEN COURT.

GS 1	GS 2	GS 3	GS 4	GS 5	GS 6	GS 7	GS 8
GS 9	GS 10	GS 11	GS 12	GS 13	GS 14	GS 15	GS 16
GD 2	GD 4	GD 6	GD 8	GD 10	GD 12	GD 14	GD 16
GS 17	GS 18	GS 19	GS 20	GS 21	GS 22	GS 23	GS 24
GD 17	GD 18	GD 19	GD 20	GD 21	GD 22	GD 23	GD 24
GS 25	GS 26	GS 27	GS 28	GS 29	GS 30	GS 31	GS 32
GD 25	GD 26	GD 27	GD 28	GD 29	GD 30	GD 31	GD 32
GS 33	GS 34	GS 35	GS 36	GS 37	GS 38	GS 39	GS 40
END OF DAY 1							
GD 33	GD 34	GD 35	GD 36	GS 41	GS 42	GS 43	GS 44
GS 45	GS 46	GS 47	GS 48	GD 37	GD 38	GD 39	GD 40
GS 49	GS 50	GS 51	GS 52	GD 43	GD 44	GD 41	GD 42
GS 55 <small>SEMI-FINAL</small>	GS 56 <small>SEMI-FINAL</small>	GD 47 <small>SEMI-FINAL</small>	GD 48 <small>SEMI-FINAL</small>	GS 53	GS 54	GD 45	GD 46
END OF DAY 2							
GS 57	GS 58	GD 49	GD 50	GS 59 <small>CHAMPIONSHIP</small>	GD 51 <small>CHAMPIONSHIP</small>	GS 60 <small>3RD/4TH PLACE</small>	GS 61 <small>5TH/6TH PLACE</small>
GD 52 <small>3RD/4TH PLACE</small>	GD 53 <small>5TH/6TH PLACE</small>						

	CONSOLATION BRACKET
GS	GIRLS SINGLES
GD	GIRLS DOUBLES

2019 STATE B-C GIRLS TENNIS TOURNAMENT – SINGLES CHAMPIONSHIP BRACKET



TEAMS

- Anaconda(ANA)
- Baker(BK)
- Bigfork(BF)
- Broadwater(BR)
- Chester-Joplin-
- Inverness(CJI)
- Chinook(CHI)
- Choteau(CHO)
- Clark Fork (CF)
- Conrad(CON)
- Cut Bank(CB)
- Darby(DB)
- Fairfield(FF)
- Forsyth(FOR)
- Harlem(HAR)
- Libby(LB)
- Loyola(LSH)
- Lone Peak(LP)
- St. Ignatius(SI)
- Troy(TR)
- Valley Christian(VCS)
- Whitehall(WH)



1ST PLACE

2ND PLACE

2019 STATE B-C GIRLS TENNIS TOURNAMENT – SINGLES CONSOLATION BRACKET

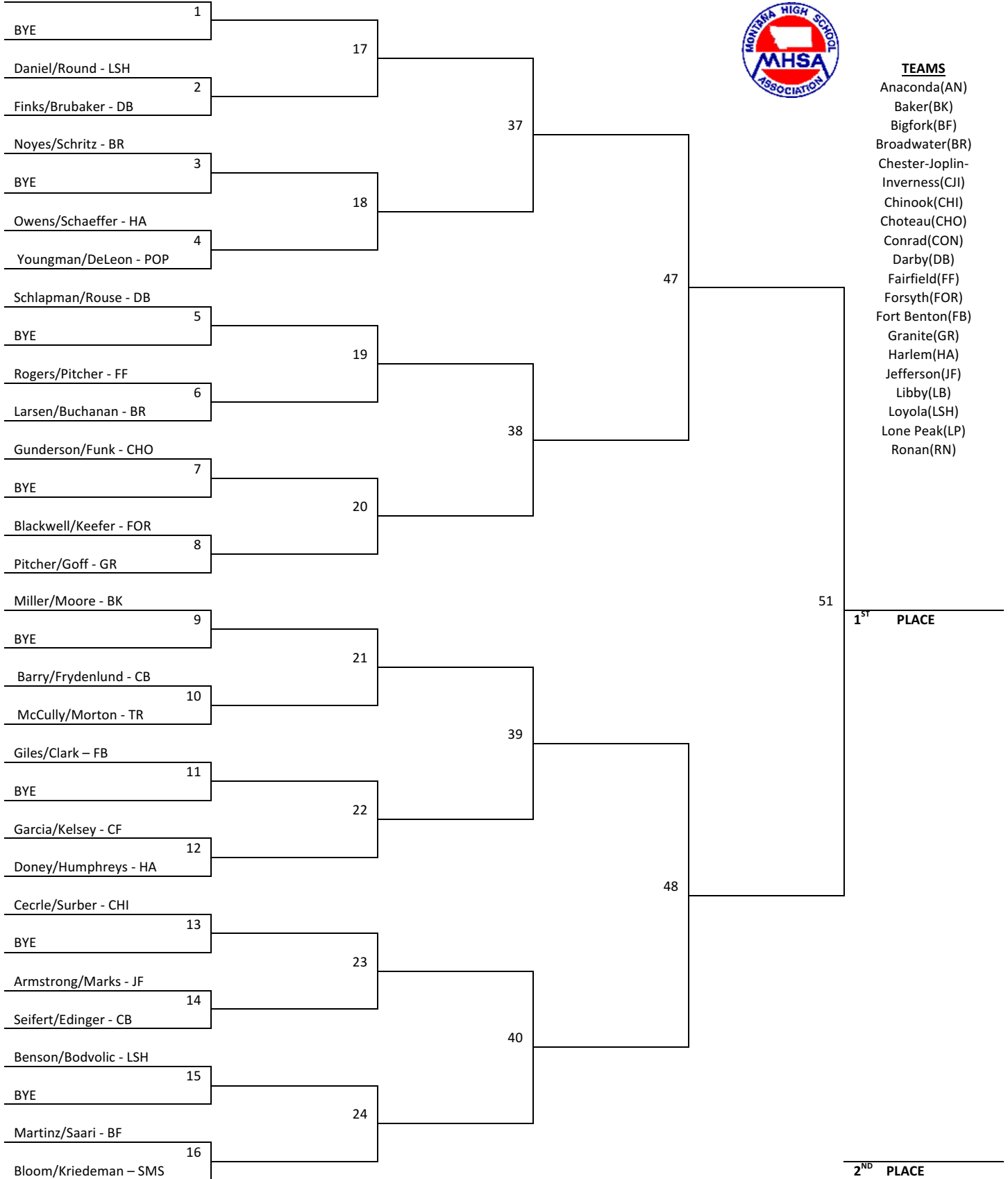


- TEAMS**
- Anaconda(ANA)
 - Baker(BK)
 - Bigfork(BF)
 - Broadwater(BR)
 - Chester-Joplin-Inverness(CJI)
 - Chinook(CHI)
 - Choteau(CHO)
 - Clark Fork (CF)
 - Conrad(CON)
 - Cut Bank(CB)
 - Darby(DB)
 - Fairfield(FF)
 - Forsyth(FOR)
 - Harlem(HAR)
 - Libby(LB)
 - Loyola(LSH)
 - Lone Peak(LP)
 - St. Ignatius(SI)
 - Troy(TR)
 - Valley
 - Christian(VCS)
 - Whitehall(WH)



2019 STATE B-C GIRLS TENNIS TOURNAMENT – DOUBLES CHAMPIONSHIP BRACKET

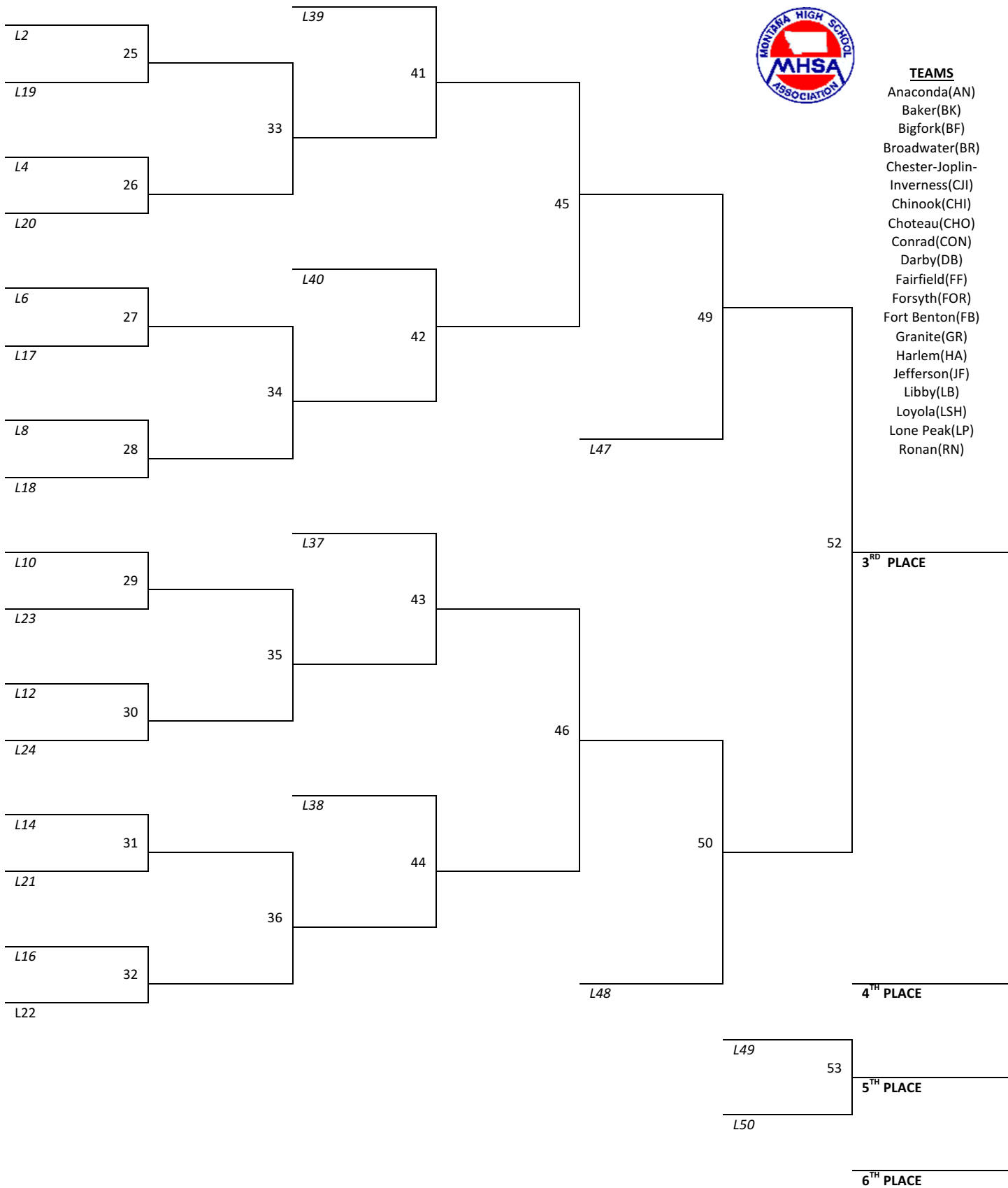
Fox/Bedford = BF



2019 STATE B-C GIRLS TENNIS TOURNAMENT – DOUBLES CONSOLATION BRACKET



- TEAMS**
- Anaconda(AN)
 - Baker(BK)
 - Bigfork(BF)
 - Broadwater(BR)
 - Chester-Joplin-Inverness(CJI)
 - Chinook(CHI)
 - Choteau(CHO)
 - Conrad(CON)
 - Darby(DB)
 - Fairfield(FF)
 - Forsyth(FOR)
 - Fort Benton(FB)
 - Granite(GR)
 - Harlem(HA)
 - Jefferson(JF)
 - Libby(LB)
 - Loyola(LSH)
 - Lone Peak(LP)
 - Ronan(RN)



Girls Singles Team Points

Match #	1-16	17-24	25-32	33-40	41-44	45-48	49-52	53-54	55-56	57-58	59	60	61	TOTAL
Anaconda(ANA)														
Baker(BK)														
Bigfork(BF)														
Broadwater(BR)														
Chester-Joplin-Inverness(CJI)														
Chinook(CHI)														
Choteau(CHO)														
Clark Fork (CF) (Alberton/Superior)														
Conrad(CON)														
Cut Bank(CB)														
Darby(DB)														
Fairfield(FF)														
Forsyth(FOR)														
Fort Benton(FB)														
Granite(GR)														
Great Falls Central/MSDB(GFC)														
Harlem(HA)														
Jefferson(JF)														
Libby(LB)														
Loyola(LSH)														
Lone Peak(LP)														
Poplar(POP)														
Ronan(RN)														
St. Ignatius(SI)														
Simms(SM)														
Troy(TR)														
Valier(VA)														
Valley Christian(VC)														
Whitehall(WH)														
Wolf Point(WP)														
POSSIBLE POINTS	2	1	2	1	1	2	1	1	2	1	10-7	5-4	3-1	

To determine the team scores at the tournament, two (2) advancement points will be given to those players advancing on the championship bracket and one (1) advancement point for those advancing on the consolation bracket. Bys, defaults, forfeits, and disqualifications receive two (2) points in the championship bracket and one (1) point in the consolation bracket. Player receiving byes must win the next round in order to receive advancement point(s). Other points awarded shall be first place 10 points; second place 7 points; third place 5 points; fourth place 4 points; fifth place 3 points; sixth place 1 point.

Girls Doubles Team Points

Match #	1-16	17-24	25-32	33-36	37-40	41-44	45-46	47-48	49-50	51	52	53	TOTAL
Anaconda(AN)													
Baker(BK)													
Bigfork(BF)													
Broadwater(BR)													
Chester-Joplin-Inverness(CJI)													
Chinook(CHI)													
Choteau(CHO)													
Clark Fork (CF) (Alberton/Superior)													
Conrad(CON)													
Cut Bank(CB)													
Darby(DB)													
Fairfield(FF)													
Forsyth(FOR)													
Fort Benton(FB)													
Granite(GR)													
Great Falls Central/MSDB(GFC)													
Harlem(HAR)													
Jefferson(JF)													
Libby(LB)													
Loyola(LSH)													
Lone Peak(LP)													
Poplar(POP)													
Ronan(RN)													
St. Ignatius(SI)													
Simms(SMS)													
Troy(TR)													
Valier(VA)													
Valley Christian(VCS)													
Whitehall(WH)													
Wolf Point(WP)													
POSSIBLE POINTS	2	2	1	1	2	1	1	2	1	10-7	5-4	3-1	

To determine the team scores at the tournament, two (2) advancement points will be given to those players advancing on the championship bracket and one (1) advancement point for those advancing on the consolation bracket. Byes, defaults, forfeits, and disqualifications receive two (2) points in the championship bracket and one (1) point in the consolation bracket. Player receiving byes must win the next round in order to receive advancement point(s). Other points awarded shall be first place 10 points; second place 7 points; third place 5 points; fourth place 4 points; fifth place 3 points; sixth place 1 point.

Boys Participants in 2019 State B-C Tennis

NORTHWEST									
Choteau(CHO) Conrad(CON) Cut Bank(CB) Great Falls Central Catholic/MSDB(GFC)									
BOYS' SINGLES					BOYS' DOUBLES				
	Name	YR	School		Name	YR	Name	YR	School
1	Roger Mai	12	GFC	1	Nick Scott	11	Wyatt Walters	12	GFC
2	Nick Diekens	12	GFC	2	Colby Kraft	12	Colten Barsness	11	CB
3	Eli Vincent	10	GFC	3	Ronnie Barnhill	11	Jette Pruttis	12	CON
4	Daniel Asseltine	12	CHO	4	Preston Linn	10	Justin Aderhold	9	GFC
5	Santi Suarez	11	GFC						
6	Gus Meiwald	12	CB						

SOUTH									
Anaconda(AN) Loyola Sacred Heart(LSH) Lone Peak (LP) Valley Christian(VC)									
BOYS' SINGLES					BOYS' DOUBLES				
	Name	YR	School		Name	YR	Name	YR	School
1	Jacob Bellamah	9	LSH	1	David Ramsey	12	Jacob Hollenback	12	LSH
2	Teddy Heuchling	12	LSH	2	Jaden Job	11	Giharrett Diehl	11	LSH
3	Dan Kaleva	11	LSH	3	Micah McCloy	10	Riley Riemer	9	VC
4	Caleb Thompson	11	ANA	4	Nate Centifanto	9	Ethan Roff	9	VC
5	Kevin Sweet	9	VC						
6	LeRoy Wilson	11	ANA						

SOUTHWEST									
Darby(DB) St. Ignatius(SI)									
BOYS' SINGLES					BOYS' DOUBLES				
	Name	YR	School		Name	YR	Name	YR	School
1	Jason Moore		SI	1	Lalo Bravo		Kayden Carter		SI
2	Tristan Wall		DB	2	Preston Smith		Tucker Holliday		DB
3	Rudy King		SI	3	Bye				
4	Deago Hostetler		SI	4	Bye				
5	Michael Ralph		DB						
6	Trevyn Carter		SI						

WEST									
Bigfork (BF) Troy(TR)									
BOYS' SINGLES					BOYS' DOUBLES				
	Name	YR	School		Name	YR	Name	YR	School
1	Trey Christaens	12	BF	1	Clayton Reichenbach	12	Colton Reichenbach	12	BF
2	Austin McCully	12	TR	2	Dylan Cummings	12	Alex Freund	12	TR
3	Cody Osternberg	12	TR	3	Ben Johnson	12	Wyatt Reichenbach	11	BF
4	Ricardo Cincelli	12	TR	4	Cy Winslow	12	Jaymin Stover	12	TR
5	Hans Schneller	10	BF						
6	Blane Barrows	9	BF						

Boys Court Scheduling

ALL MATCHES ON A NEXT-UP BASIS ON THE NEXT AVAILABLE OPEN COURT

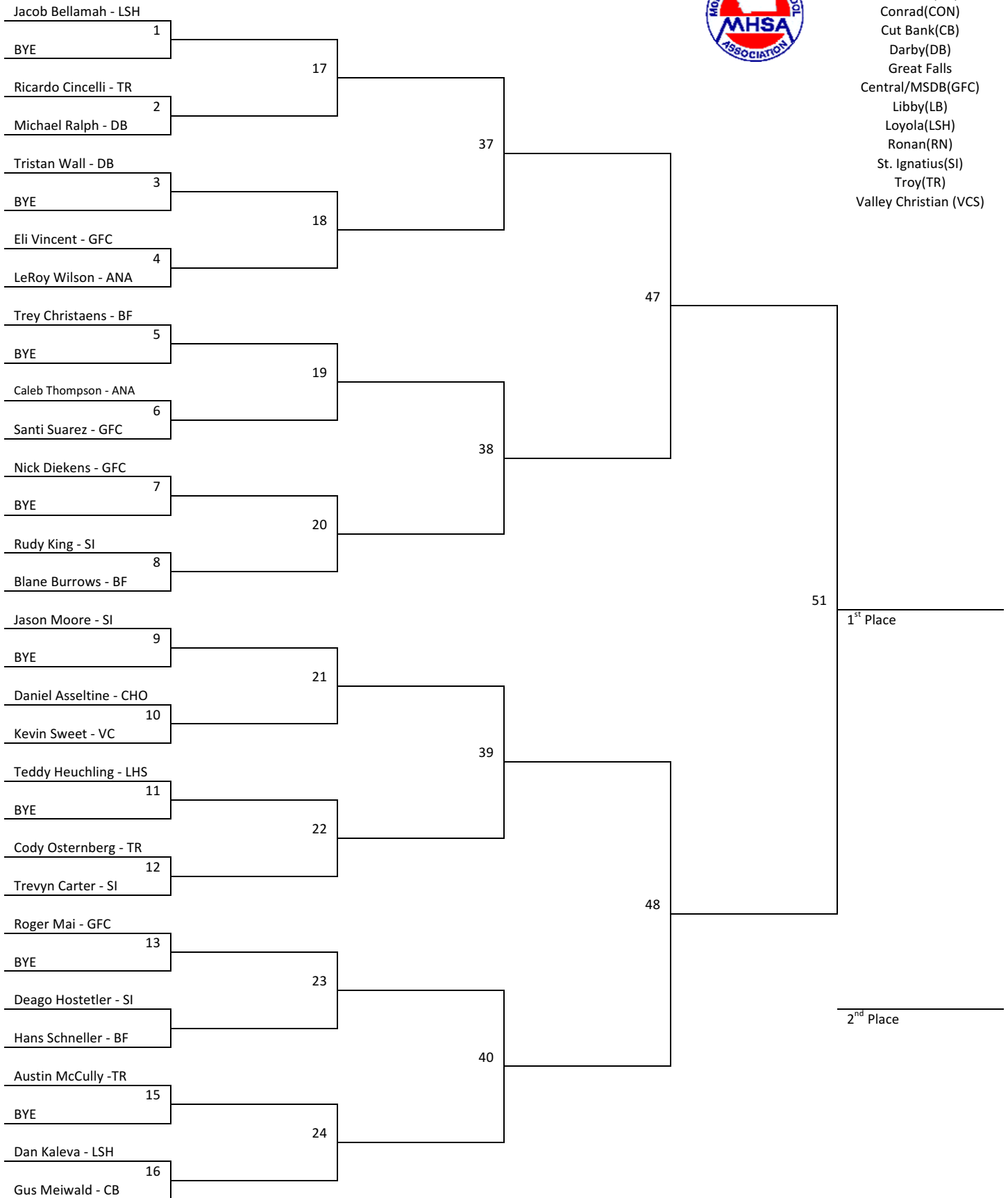
BS 2	BS 4	BS 6	BS 8	BS 10	BS 12	BS 14	BS 16
BD1	BD2	BD3	BD4	BD5	BD6	BD7	BD8
BS17	BS18	BS19	BS20	BS21	BS22	BS23	BS24
BD9	BD10	BD11	BD12	BD13	BD14	BD15	BD16
BS25	BS26	BS27	BS28	BS29	BS30	BS31	BS32
END OF DAY 1							
BS33	BS34	BS35	BS36	BS37	BS38	BS39	BS40
BD17	BD18	BD19	BD20	BS41	BS42	BS43	BS44
BD21 <small>SEMI-FINAL</small>	BD22 <small>SEMI-FINAL</small>	S47 <small>SEMI-FINAL</small>	S48 <small>SEMI-FINAL</small>	BS45	BS46	BD23	BD24
END OF DAY 2							
BS49	BS50	BD25	BD26	BS51 <small>CHAMPIONSHIP</small>	BD27 <small>CHAMPIONSHIP</small>	BS52 <small>3RD/4TH PLACE</small>	BS53 <small>5TH/6TH PLACE</small>
BD28 <small>3RD/4TH PLACE</small>	BD29 <small>5TH/6TH PLACE</small>						

	NO MATCH-BYE
	CONSOLATION BRACKET
BS	BOYS SINGLES
BD	BOYS DOUBLES

2019 STATE B-C BOYS TENNIS TOURNAMENT – SINGLES CHAMPIONSHIP BRACKET



- TEAMS**
- Anaconda(ANA)
 - Bigfork(BF)
 - Choteau(CH)
 - Conrad(CON)
 - Cut Bank(CB)
 - Darby(DB)
 - Great Falls
 - Central/MSDB(GFC)
 - Libby(LB)
 - Loyola(LSH)
 - Ronan(RN)
 - St. Ignatius(SI)
 - Troy(TR)
 - Valley Christian (VCS)

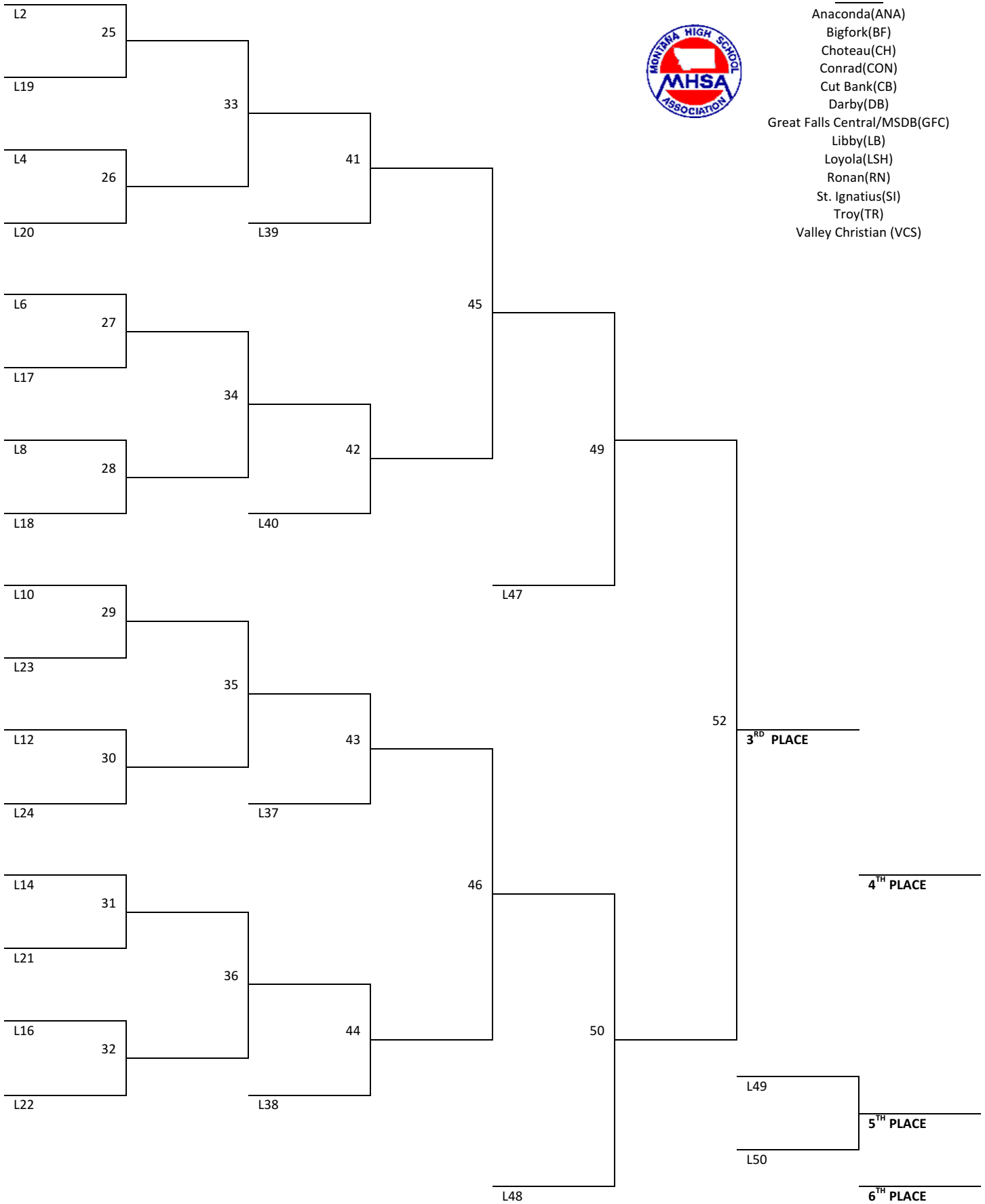


2019 STATE B-C BOYS TENNIS TOURNAMENT – SINGLES CONSOLATION BRACKET



TEAMS

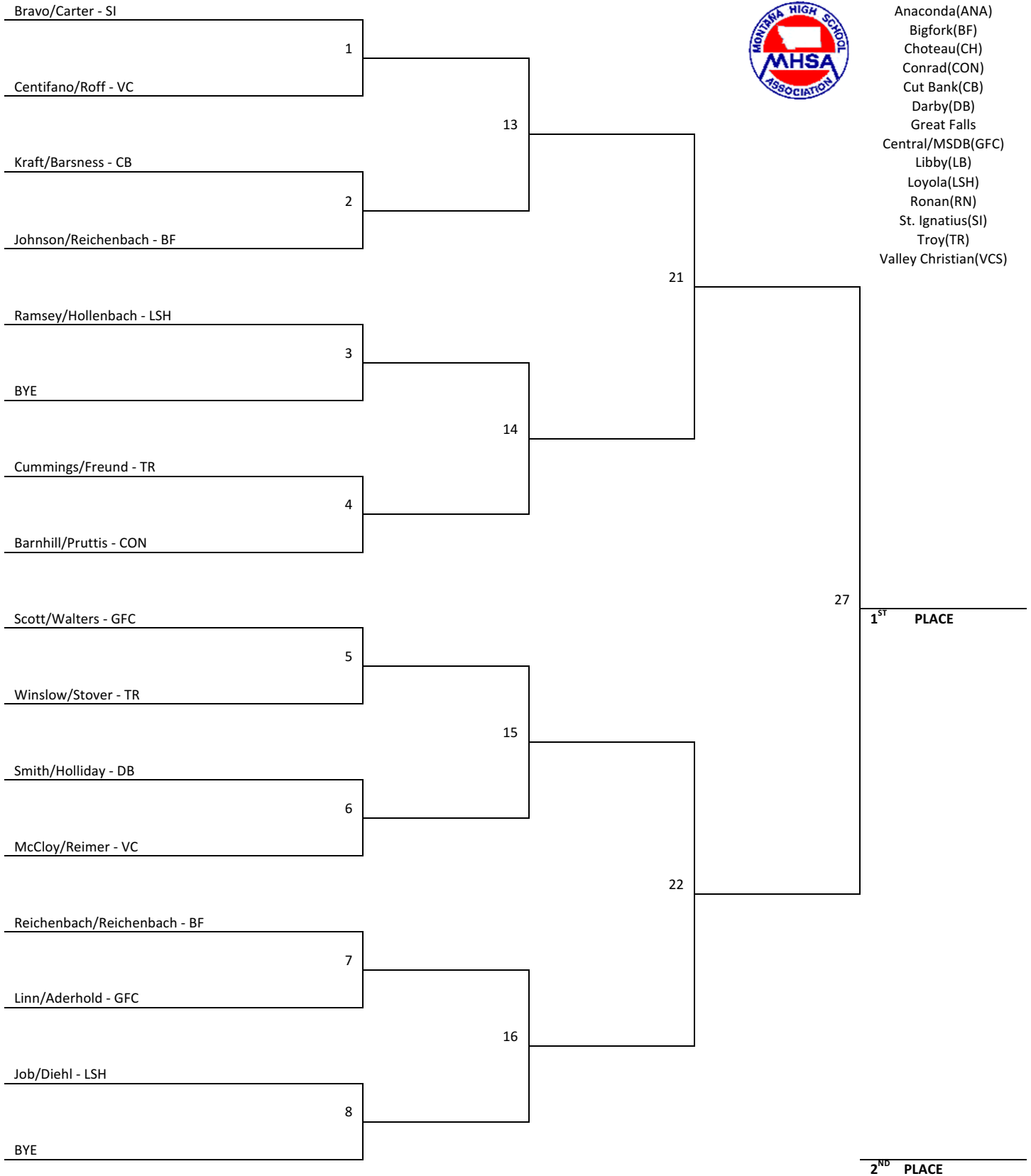
- Anaconda(ANA)
- Bigfork(BF)
- Choteau(CH)
- Conrad(CON)
- Cut Bank(CB)
- Darby(DB)
- Great Falls Central/MSDB(GFC)
- Libby(LB)
- Loyola(LSH)
- Ronan(RN)
- St. Ignatius(SI)
- Troy(TR)
- Valley Christian (VCS)



2019 STATE B-C BOYS TENNIS TOURNAMENT – DOUBLES CHAMPIONSHIP BRACKET



- TEAMS**
- Anaconda(ANA)
 - Bigfork(BF)
 - Choteau(CH)
 - Conrad(CON)
 - Cut Bank(CB)
 - Darby(DB)
 - Great Falls
 - Central/MSDB(GFC)
 - Libby(LB)
 - Loyola(LSH)
 - Ronan(RN)
 - St. Ignatius(SI)
 - Troy(TR)
 - Valley Christian(VCS)

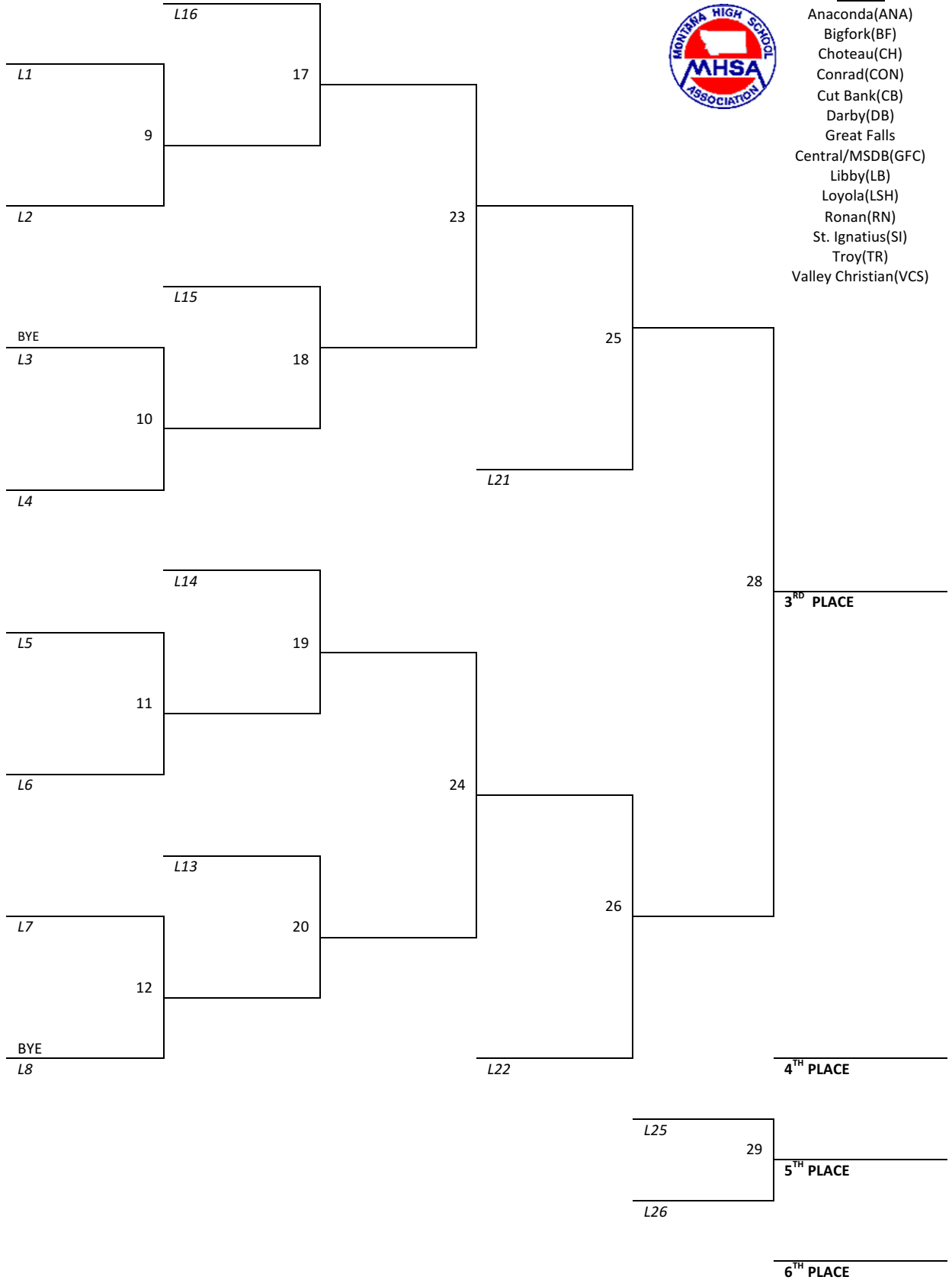


2ND PLACE

2019 STATE B-C BOYS TENNIS TOURNAMENT – DOUBLES CONSOLATION BRACKET



- TEAMS**
- Anaconda(ANA)
 - Bigfork(BF)
 - Choteau(CH)
 - Conrad(CON)
 - Cut Bank(CB)
 - Darby(DB)
 - Great Falls
 - Central/MSDB(GFC)
 - Libby(LB)
 - Loyola(LSH)
 - Ronan(RN)
 - St. Ignatius(SI)
 - Troy(TR)
 - Valley Christian(VCS)



Boys Singles Team Points

Match #	1-16	17-24	25-32	33-36	37-40	41-44	45-46	47-48	49-50	51	52	53	TOTAL
Anaconda													
Bigfork													
Choteau													
Conrad													
Cut Bank													
Darby													
Great Falls Central													
Libby													
Loyola													
Ronan													
St Ignatius													
Troy													
Valley Christian													
Possible Points	2	2	1	1	2	1	1	2	1	10/7	5/4	3/1	

To determine the team scores at the tournament, two (2) advancement points will be given to those players advancing on the championship bracket and one (1) advancement point for those advancing on the consolation bracket. Byes, defaults, forfeits, and disqualifications receive two (2) points in the championship bracket and one (1) point in the consolation bracket. Player receiving byes must win the next round in order to receive advancement point(s). Other points awarded shall be first place 10 points; second place 7 points; third place 5 points; fourth place 4 points; fifth place 3 points; sixth place 1 point.

Boys Doubles Team Points

Match #	1-8	9-12	13-16	17-20	21-22	23-24	25-26	27	28	29	TOTAL
Anaconda											
Bigfork											
Choteau											
Conrad											
Cut Bank											
Darby											
Great Falls Central											
Libby											
Loyola											
Ronan											
St Ignatius											
Troy											
Valley Christian											
Possible Points	2	1	2	1	2	1	1	10/7	5/4	3/1	

To determine the team scores at the tournament, two (2) advancement points will be given to those players advancing on the championship bracket and one (1) advancement point for those advancing on the consolation bracket. Byes, defaults, forfeits, and disqualifications receive two (2) points in the championship bracket and one (1) point in the consolation bracket. Player receiving byes must win the next round in order to receive advancement point(s). Other points awarded shall be first place 10 points; second place 7 points; third place 5 points; fourth place 4 points; fifth place 3 points; sixth place 1 point.

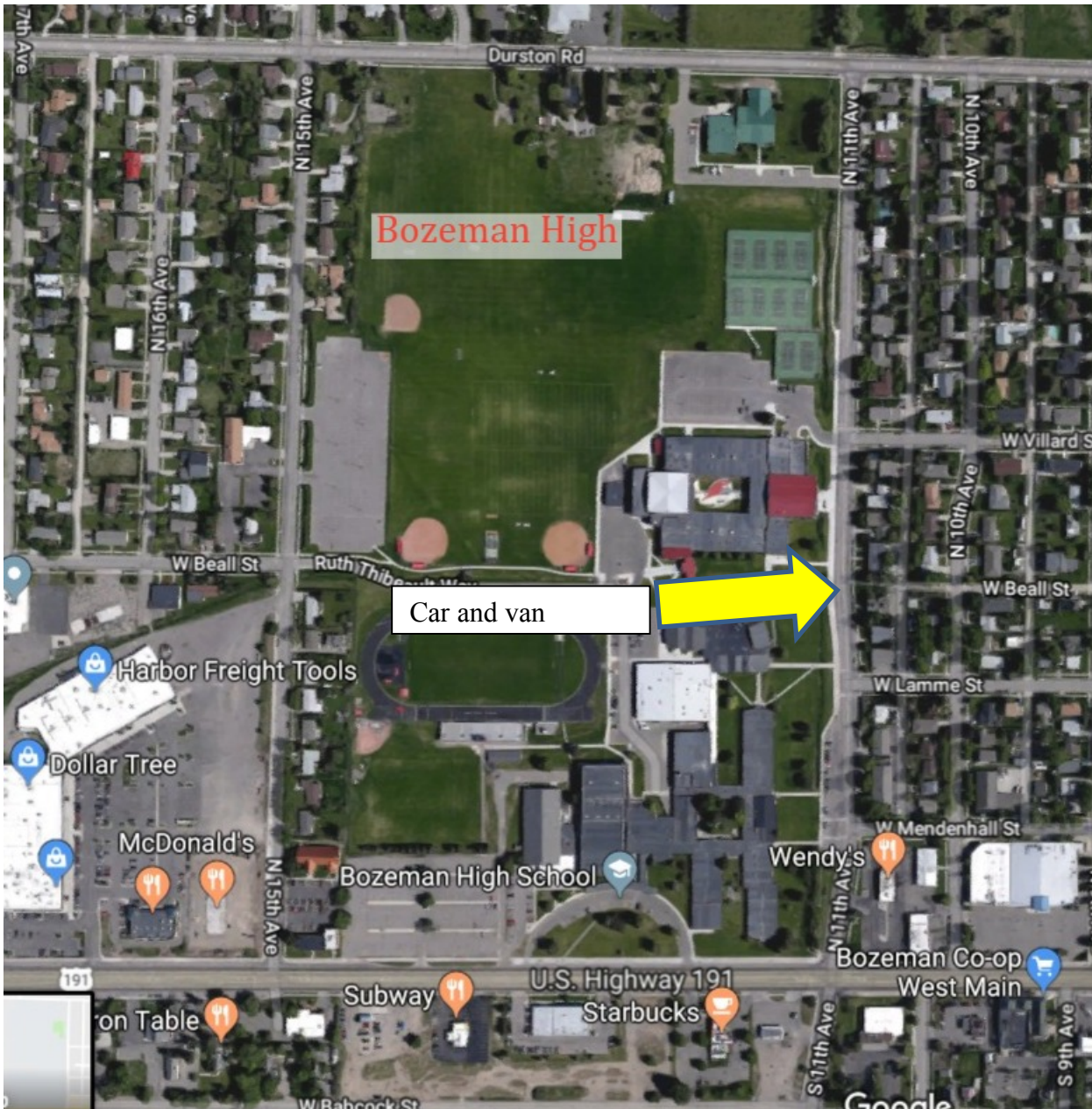
2019 State B-C Tennis Maps Montana State University

Buses need to be in back of Southfield house lot. Parking permits required.



Bozeman High School

No bus parking! Park cars along North 11th. Return buses to MSU



2019 CLASS B-C STATE TENNIS TOURNAMENT COACH ROSTER

As of May 13, 2019

SCHOOL	COACH/AD	PHONE/CELL	E-MAIL	MASCOT
Anaconda	AD-Allen Green	563-5269	agreen@anacondaschools.org	Copperheads
	Boys/Girls-Spencer Fehr	880-1740	sfehr@anancondaschools.org	
Baker	AD-Dave Breitbach	778-2966	breitbachd@baker.k12.mt.us	Spartans
	Girls-			
	Girls Asst.-			
Bigfork	AD-David Creamer	837-7420	dcreamer@bigfork.k12.mt.us	Valkyries
	Girls-Mike Bonner	360-7320	mikebon24@icloud.com	Vikings
	Boys-Paul Sullivan Jr.	544-5414	pauldsullivanjr@gmail.com	
Broadwater (Townsend)	AD-Jim Holland	441-3445	athletics@townsend.k12.mt.us	Bulldawgs
	Girls-John O'Dell	980-1584	jodell@townsend.k12.mt.us	
	Girls Asst.-Amy White	250-8863	awoodger@hotmail.com	
Chester-Joplin-Inverness	AD-Rita Chvilicek	759-5477	rchvilicek@cji.k12.mt.us	Hawks
	Girls-Ally Jones	621-0114	ajones@cji.k12.mt.us	
Chinook	AD-Paula Molyneaux	357-2236 x 254	molyneaux@chinookschools.org	Sugarbeeters
	Girls- Emily Harshman	262-4378		
	Girls Asst.-			
Choteau	AD-David Jamison	466-5303	david.jamison@choteauschools.net	Bulldogs
	Boys/Girls-Carla May	590 - 4033	carla.may@choteauschools.net	
	Asst. Boys/Girls-			
	Asst. Boys/Girls-			
Clark Fork (Superior-Alberton)	AD-Chris Clairmont	822-3600x112	cclairmont@ssd3.us	Mountain Cats
	Girls-Angie Hopwood			
Conrad	AD-Jim Carroll	278-3285	tjcarrol@rocketmail.com	Cowboys
	Boys/Girls-Jessica Jensen	599-2604	gollehon25@yahoo.com	
	Asst. Boys/Girls-Kesler Martin	450-4482		
Cut Bank	AD-Don Paulson	873-5629	cbhsdp@cutbankschools.net	Wolves
	Boys/Girls-Jim Gregg	788-1902	jimg@bresnan.net	
	Asst. Boys/Girls-Paul Schilling	845-4877		
Darby	AD-JP McCrossin	821-3252	jmccrossin@darby.k12.mt.us	Tigers
	Boys/Girls-Richard May	381-1550	rmay@darby.k12.mt.us	
	Asst. Boys/Girls-Megan Schilling	490-2693		
Fairfield	AD-Mike Schmidt	590-2677	mschmidt@fairfield.k12.mt.us	Eagles
	Girls-Kaylee Baeth	590-2419	kbaeth@fairfield.k12.mt.us	
	Girls Asst.-Liz Anderson	590-2425		
	Girls Asst.-Dustin Gordon	590-2425	dgordon@fairfield.k12.mt.us	
Forsyth	AD-Craig Knoche	346-2796	cknoche@forsyth.k12.mt.us	Dogies
	Girls-Melanie Martens	351-1049	mmartens@forsyth.k12.mt.us	
Fort Benton	AD-Robert Schoonover	621-5698	schoonie21@gmail.com	Longhorns
	Girls-Suzie Woodburn		matzenhauer.suzie@gmail.com	
Granite (Philipsburg)	AD-Dustin Keltner	859-3232x226	keltnerd@pburg.k12.mt.us	Prospectors

